

SSFA comparison

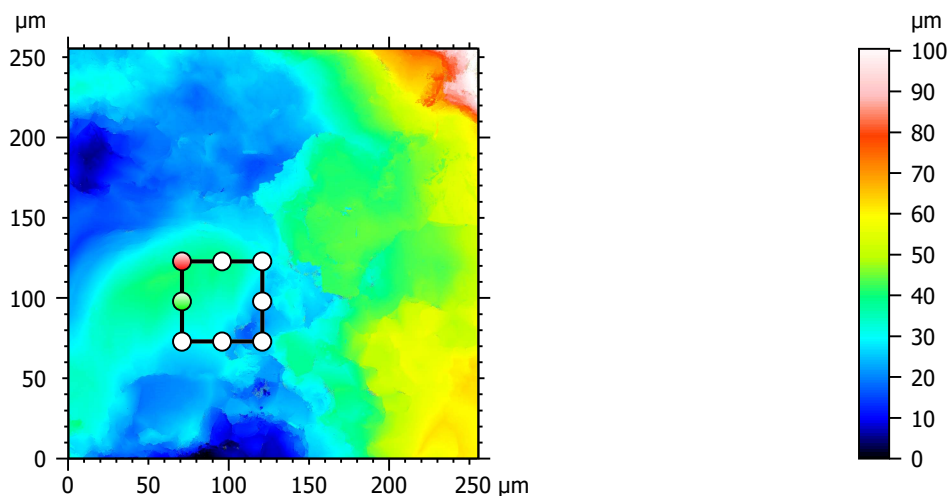
Template to process all lithic surfaces acquired with the Zeiss LSM 800 with the 50x/0.95 objective.

A. Processing

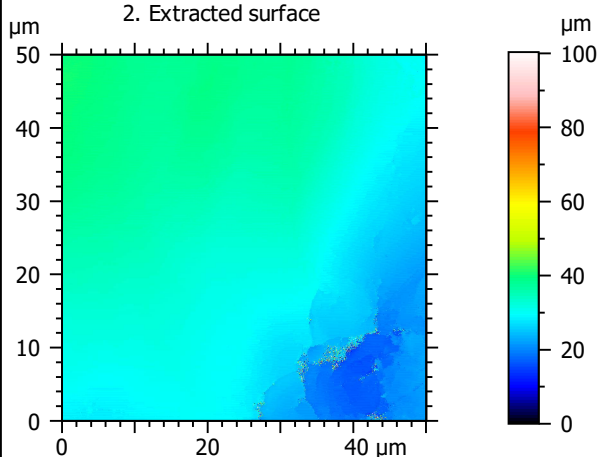
Identity card

Name:	QTZ3-13_LSM_50x-0.95_20190815_Area1_Topo		
File path:	D:\Data\3Ddata\SSFA\Lithics\Original surfaces\QTZ3-13_LSM_50x-0.95_20190815_Area1_Topo.sur		
Created on:	8/15/2019 1:15:53 PM		
Studiable type:	Surface		
Axis:	X		
Length:	255.5	µm	
Size:	3000	points	
Spacing:	0.08519	µm	
Axis:	Y		
Length:	255.5	µm	
Size:	3000	points	
Spacing:	0.08519	µm	
Axis:	Z		
Layer type:	Topography		
Length:	100.4	µm	
Size:	65532	digits	
Spacing:	0.001533	µm	
NM-points ratio:	0.000 % (0 Pts)		

1. Acquired surface

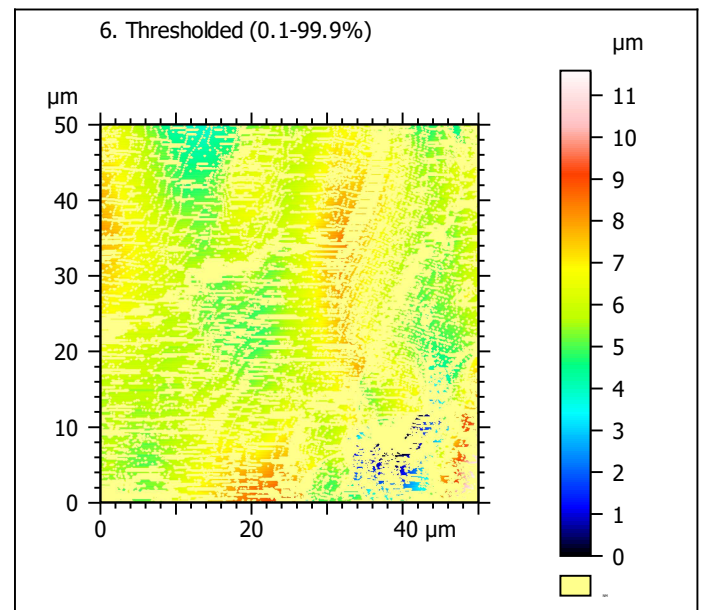
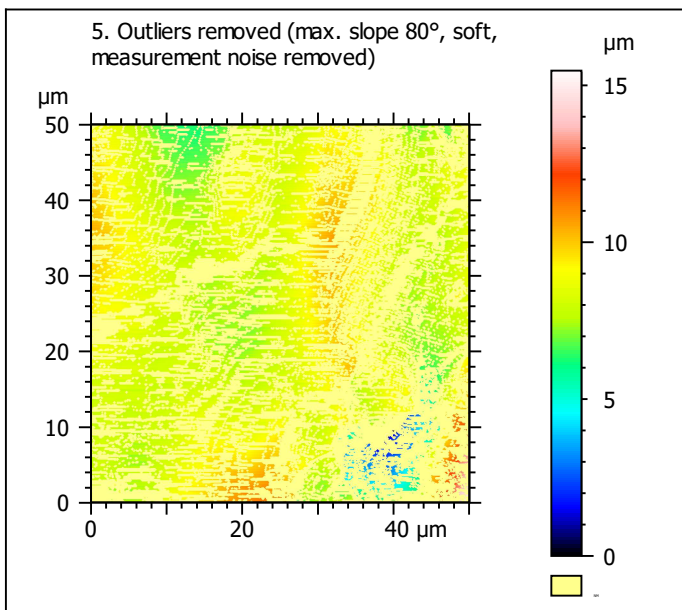
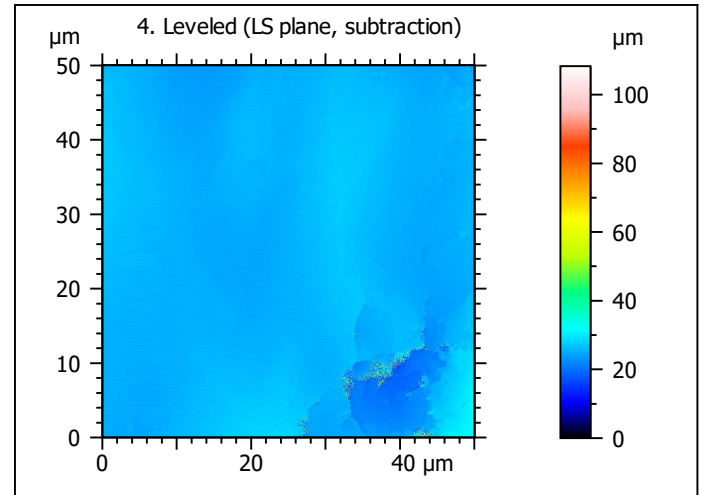
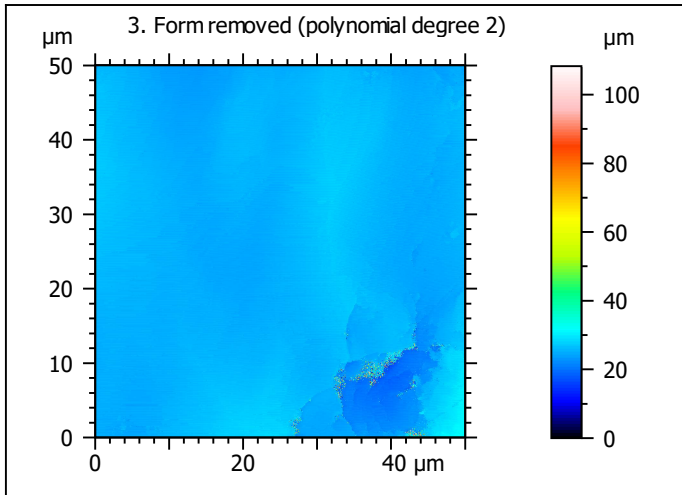


2. Extracted surface



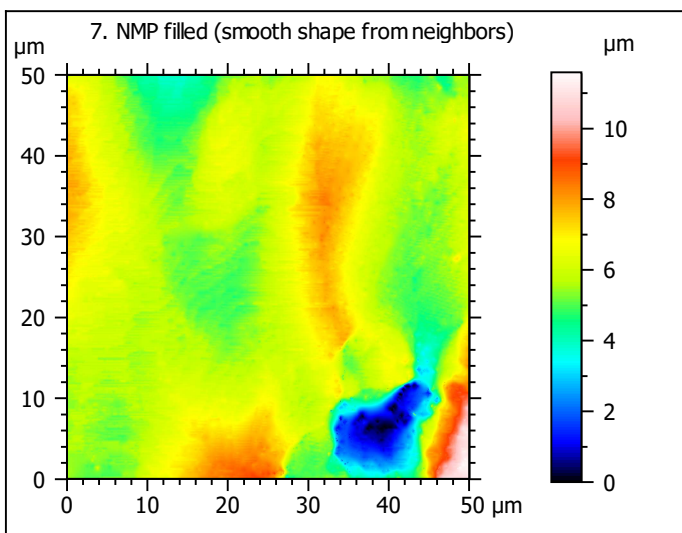
Identity card

Name:		QTZ3-13_LSM_50x-0....opo > Extracted area		
Axis:		X		
Length:	50.00	µm		
Size:	588	points		
Axis:		Y		
Length:	50.00	µm		
Size:	588	points		
Axis:		Z		
Layer type:	Topography			
Length:	100.3	µm		
Size:	65469	digits		
NM-points ratio:	0.000 % (0 Pts)			

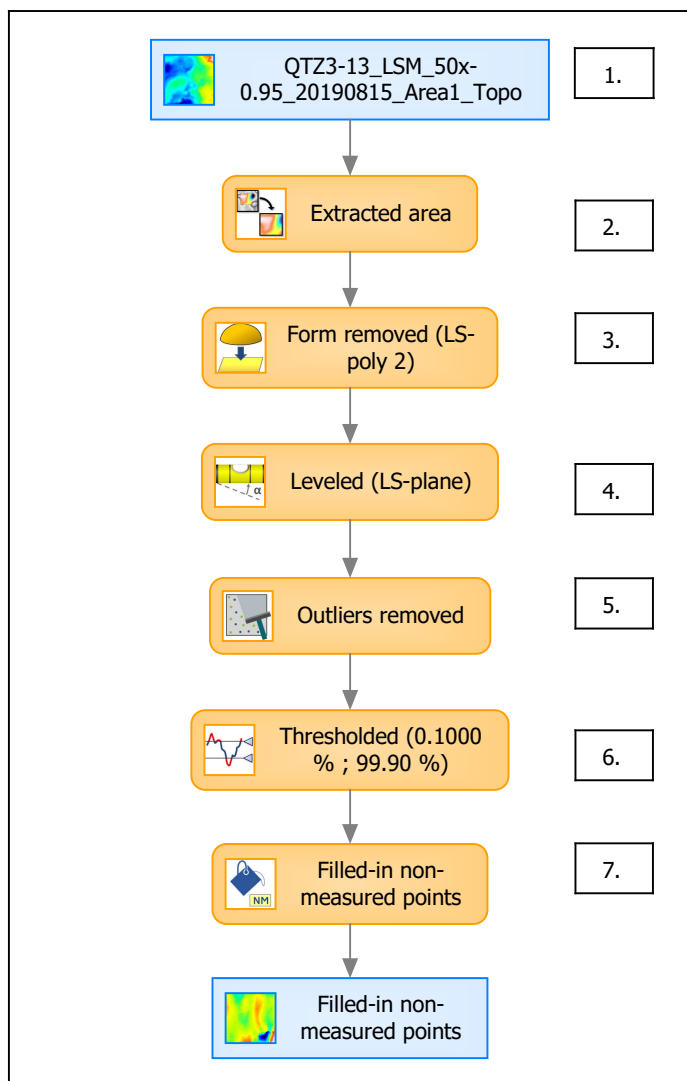


Identity card	
Name:	QTZ3-13_LSM_50x-0....e) > Outliers removed
Axis:	Z
NM-points ratio:	57.38 % (198387 Pts)

Identity card	
Name:	QTZ3-13_LSM_50x-0....0.1000 % ; 99.90 %)
Axis:	Z
NM-points ratio:	57.46 % (198681 Pts)



B. Summary



Identity card

Name: QTZ3-13_LSM_50x-0.95_20190815_Area1_Topo > Extracted are...resholded (0.1000 % ; 99.90 %) > Filled-in non-measured points

Studiabale type: Surface

Axis: X

Length: 50.00 μm
Size: 588 points
Spacing: 0.08519 μm

Axis: Y

Length: 50.00 μm
Size: 588 points
Spacing: 0.08519 μm

Axis: Z

Layer type: Topography

Length: 11.59 μm
Size: 7561 digits
Spacing: 0.001533 μm

